



Specification about Notebook Color Doppler YJ-U200



Display mode

B&W mode: B, 2B, 4B, B/M, M, B/C

Color Doppler mode: CFM, PDI, PW

Duplex: Real-time simultaneous 2D, Doppler

Gray scale: 256

Display: 15 inches LCD monitor

Transducer frequency: 2.0-12MHz

Digital technology: Dynamic Receiving Focusing (DRF)
Dynamic Frequency Scanning (DFS)

Scanning depth: ≥ 300 mm

Imaging Processing

Pre-processing: 8-segment TGC

Preset

Gain (B&W, Color, Doppler)

Audio

PRF

Dynamic Range



- Image enhancement
- Acoustic Power
- Post-processing: gray map
- Black/white reverse
- Left/right reverse
- Up/down reverse

Functions:

- Cine-loop: 1200 frame cine loop memory
- Storage media: 32G(it depends on customer's request)
- Zoom: Pan Zoom
- USB ports: 2
- THI: tissue harmonic imaging
- ITouch
- IClear Imaging

Measurement & Calculations

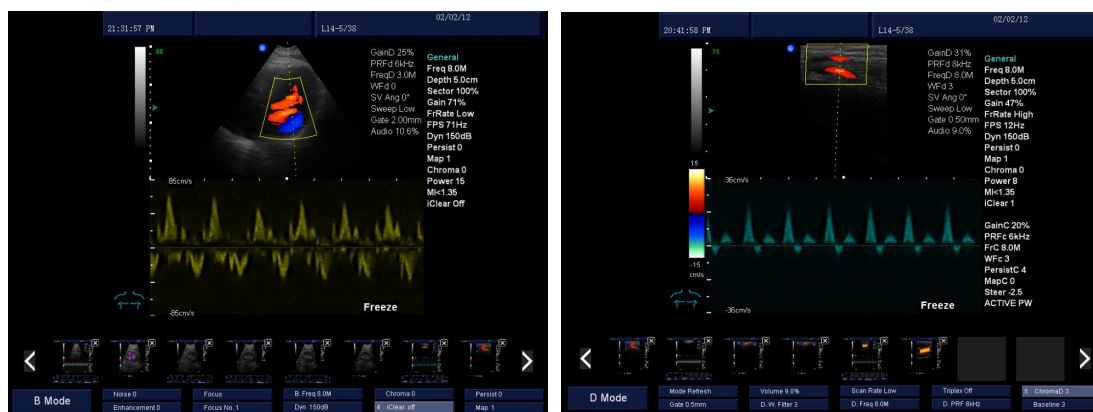
- B mode: distance, circumference, area, volume, angle, fetal growth, cruve
- M mode: distance, time, velocity, heart rate
- Software package: abdomen, gynecology, obstetrics, cardiology, small parts, urology

Others

- Transducer connectors: 1 active transducer connector port
- Peripheral ports: Dicom, print, video, VGA, 2 USB ports
- Power supply: 100~240VAC+_10%, 50Hz/60Hz

Transducers:

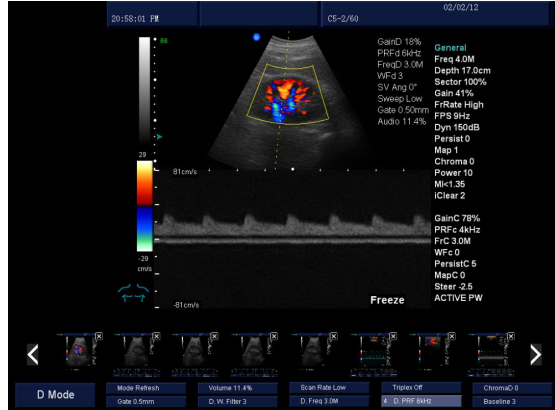
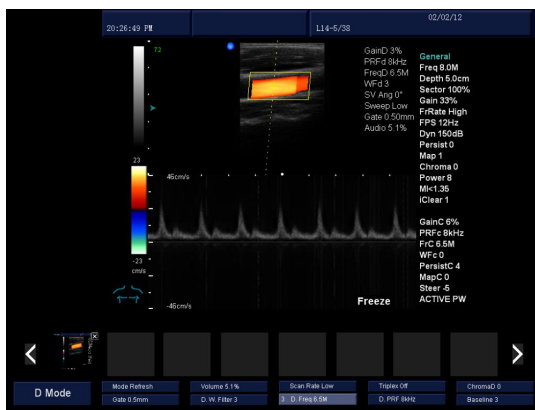
- Electronic convex array transducer Electronic trans-vaginal array transducer
- Electronic linear array transducer Electronic micro-convex transducer





Forever Medical

www.yongjiumed.com



LAPTOP COLOR DOPPLER



Forever Medical

www.yongjiumed.com



LAPTOP COLOR DOPPLER



Forever Medical

www.yongjiumed.com



LAPTOP COLOR DOPPLER