



## Technical Specifications

Model	YJ-250					
Analytical System	Random access with direct reading system					
Method	End point, Kinetic, Fixed time, Immunoturbidimetric, 1-2 reagent, Multistandard, reagent/serum blank, etc.					
Assay Item	40 assay (80 optional) ISE module (K+, Na+, Cl-, Ca2+) available on request					
Throughput	1 Reagent	240 tests/hour				
	2 Reagent	150 tests/hour				
	With ISE	120 test/hour (optional)				
Test Menu	T.BILI	r-GT/GGT	CHO	Ca	APOB-1/B	CHE
	D.BILI	ALP/AKP	TG	CL	APOB	CREA
	TP	UREA	CK	P	CK-MB	Mg
	ALB	CREA	LDH	C	ASO	AFU
	Lactic Acid	ALT/GPT	UA	a-HBDH	CO2	FMN
	LP(a)	AST/GOT	GLU	AMY	LDL-C	HDL-C
	CHE	LA	TBA	ADA	HS-CRP	PA
	Fe	Cu	Zn	C3	C4	IgG
	IgM	IgA	and drug, toxicity, etc.			
	Sample Position	60				
Sample Volume	Including standard, control and STAT; either serum cup or blood tube available					
Reagent Position	1~100ul, 0.1ul / step					
Reagent Volume	40 positions (80 optional)					
Reagent / Sample Probe	R1:1~400ul, 1ul / step, R2:1~400ul, 1ul / step					
Reaction Time	With liquid level sensor, collision sensor, teflon coating and automatic washing. 0~999 seconds					
Cuvette	High quality uv-transmitted plastic cuvette or quartz glass cuvettes on request.					
Washing	8 channels automatic washing system for reaction cuvettes; independent washing station for each sample/reagent probe and mixer					
Alarm	Automatic alarm for malfunction (eg: collision, reagent insufficiency, full waste container, etc)					
Calibration	Linear, Non-linear, Multi point, K factor					
Sample Dilution/Retest	Sample can be diluted and retested if results are out of range or sample is insufficient.					
Wavelength	340~810nm					
Light Source	Halogen lamp					
Absorbance Resolution	0.0001A					
Absorbance Accuracy	±0.0003A(0~2.5A)					
Carry-over	≤0.1%					
Quality Control	Levy Jennings quality control program at 3 levels					
Bar Code	Optional					
Printer	Multiple report formats available					
Language	English (French, Spanish, German, Russian, etc. on request)					
System	Windows XP ; Windows 7					
Power Supply	220V / 50Hz, or 110V / 60Hz					
Dimension	85cm×72cm×53cm					
Weight	85Kg					

■ SINNOWA reserves the right to change the technical specifications without prior notice.



Fully Automatic Chemistry Analyzer

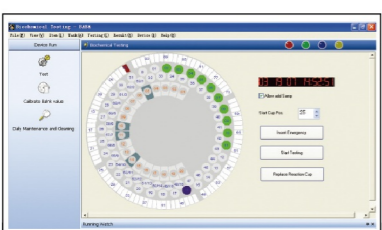
● CE ● ISO9001:2008 ● ISO13485:2003 ●

- Random access and direct reading system
- New concept and more friendly software
- Automatic washing station for both sample and reagent probe
- Liquid level detection, collision protection for sample / reagent probe.
- Reliable cooling system for reagent chamber
- 8 channels automatic cuvette washing system.
- Perfect self-checking and alarm function
- Bar code reader and ISE Module available on request
- Designed with environmental protection concept

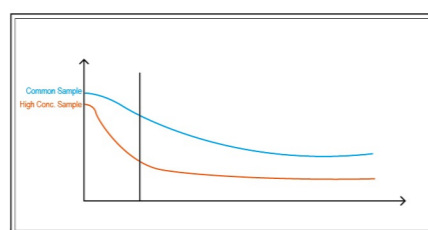


- Sample/Reagent Probe**  
Sample/reagent probe with liquid sensor, anti-collision sensor and automatic washing function
- Sample/Reagent Disk**  
40 positions (80 positions optional); 24-hour continuous refrigeration system with independent switch; 60 sample positions, available to use serum cup or blood tube
- Cuvettes**  
High quality UV-transmitted plastic cuvettes, quartz glass cuvettes optional
- 8 channels automatic washing system**  
Eight channels washing station for each cuvette, automatic record and deduct cuvette blank value
- Independent mixer** ensuring full reaction of sample/reagent position

### Software

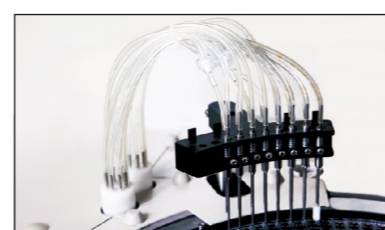


User-friendly interface and compatible with Windows XP, Windows 7



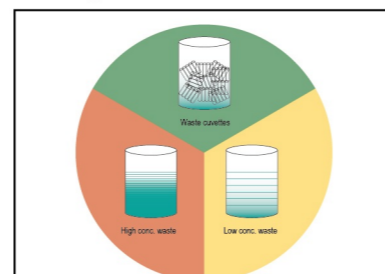
Variable reading function

### Automatic Washing Station



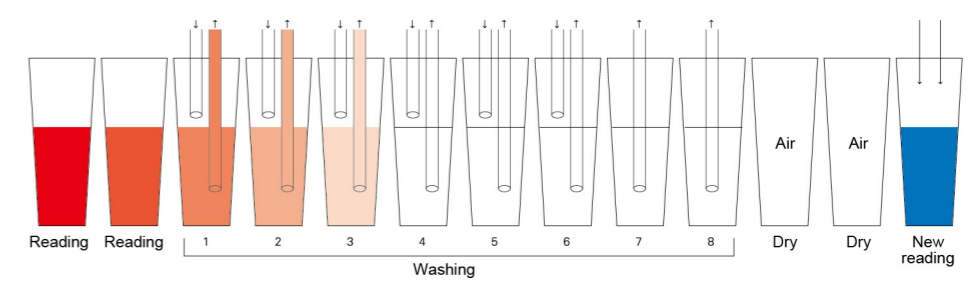
An 8-channel washing station ensures the complete washing for cuvettes

### Environmental Protection Design



The waste is automatically classified and collected into different containers

### Automatic cuvette washing and blanking makes more precise results



Wavelength	Reading	Reading	Wash1	Wash2	Wash3	Wash4	Wash5	Wash6	Wash7	Wash8	Dry	Dry	Reading
340nm	/	1.3100	0.025	0.0092	0.0037	0.0022	0.0008	0.0006	0.0005	0.0002	0.0800	0.0850	/
405nm	/	0.6820	0.0112	0.0075	0.0033	0.0019	0.0010	0.0005	0.0003	0.0002	0.0800	0.0805	/

Test O.D. Value – Real reagent blank = True O.D. Value



Carry-over control function



Automatic alarm for malfunctions